

2013: Integrating the Sociology Eclectic: Research, Teaching and Activism

by Barbara Keating

The MSS 2013 triskelion, boldly displayed on the program book and conference T-shirts, invited 1075 sociologists to share their work with the theme, "Integrating the Sociology Eclectic: Research, Teaching and Activism." This Neolithic symbol representing the integration of multiple elements or dimensions is found in a variety of places from the prehistoric Celtic Newgrange to the seal of the US Department of Transportation. Our modern interpretation, designed by Local Arrangements Chair David Boden, aptly illustrates the integration of the multiple layers found in our research, teaching and activism within the eclectic spirit of our discipline.

Our Chicago meetings offered a richly diverse set of opportunities. A standing ovation concluded the special production of Howard Zinn's *Marx in Soho* performed by Bob Weick of Iron Age Theatre. The play humanizes Marx while demonstrating how his ideas evolved out of the troubled context of his times and still very much apply to today's issues. Linda Lindsey's insightful Presidential Address, "Sharp Right Turn: Globalization and Gender Equity," documented both progress and the need for continued research and activism for women amid our myriad, global complexities.

Ray Hutchinson's "Discovering the Chicago School" tour explored the ongoing dramatic changes in the neighborhoods studied by the Chicago School of Urban Sociology. Susan Stall's panel about and tour to Jane Addams' Hull House also reflected our theme. Sociologist and Nobel Peace Prize winner Jane Addams combined research, education and activism to make a difference for immigrants, women and workers.



Past President Linda Lindsey passes the gavel to incoming President Barb Keating.



The heart of our conference, of course, included more than 700 presentations in 137 formal paper sessions, 32 panels, 21 workshops, 20 roundtables, three authors-meet-critics sessions and three poster sessions. Professors, applied sociologists, emeriti and students shared research and best practices data, teaching and assessment strategies, and social justice advocacy. Attendees reported interesting papers, constructive feedback and stimulating discussion in the sessions.

Social events complemented the scholarship. The MSS Connections lunch offered designated and open tables at which guests could greet returning friends and meet new colleagues with similar interests. Wednesday's T-shirt Happy Hour featured MSS t-shirts given as prizes to those sporting the winning t-shirts in ten categories from funniest to social justice advocacy. Questions about sociology, popular culture and Chicago challenged participants at the Trivia Night. The table sponsored by Joan Hermesen, "Mizzou Sociology," won first place and MSS t-shirts. Tom Gerschick's sponsored table team, "The Unintended Consequences," took second place, winning mystery novels. Open Table #7 named themselves the "Lucky Seven" and won third place and Robert Fulghum books.

2013 ANNUAL MEETING CONT'D PAGE 24

INSIDE THIS ISSUE

ELECTION RESULTS
2-3

ANNUAL MEETING
AWARDS
5-11

PHOTOS FROM THE
ANNUAL MEETING
14-17

OPPORTUNITIES
18-21

CALL FOR ORGANIZERS
FOR 2014 MEETING
28-29

mss
MIDWEST SOCIOLOGICAL SOCIETY
www.themss.org

TABLE OF CONTENTS

the
midwest
SOCIOLOGIST

VOLUME LV
NUMBER 3

MAY 2013

THE MIDWEST
SOCIOLOGIST IS
PUBLISHED THREE
TIMES A YEAR
FOR MAILING TO
THE MEMBERS
OF THE MIDWEST
SOCIOLOGICAL
SOCIETY.

EXECUTIVE DIRECTOR

LAUREN TIFFANY
429 24TH ST. N.
LA CROSSE, WI 54601
(608) 787-8551
MIDWESTSS@
CENTURYTEL.NET

ELECTION RESULTS

Doug Hartmann Elected to MSS Presidency	3
Members Elect Badahdah, Berger, Pelton, Redlin	4

ANNUAL MEETING 2013

COVER STORY Integrating the Sociology Eclectic: Annual Meeting Wrap-up.....	1
Awards Presented at the Annual Meeting	5-11
Peter Hall Lecture, Presidential Address.....	12-13
PHOTOS from the 2013 Annual Meeting	14-17

UPDATE from the 2012-13 MSS/ASA Minority Fellow	13
---	----

OPPORTUNITIES for MSS MEMBERS

Student Paper Competition.....	18
Committees Seeking New Members	19
Calls for Awards, Grants	20-21

SOCIETY NEWS

The Budget and Financial Condition of MSS	22-23
MEMBER NEWS / MEMBERSHIP MATTERS / CODE OF ETHICS	24-25
ANNUAL MEETING 2014 Theme / Call for Sessions	26-27
BACK COVER: Preview of next issue of <i>The Sociological Quarterly</i>	28

OFFICERS & EDITORS

President
Barbara Keating,
Minnesota State U., Mankato

President-Elect/Program Chair
Kevin T. Leicht, University of Iowa

President-Elect-Elect
Doug Hartmann,
University of Minnesota

Past President/ASA Rep
Linda Lindsey,
Maryville U. of St. Louis

Secretary
Lee Miller,
Sam Houston State University

Treasurer
Tom Gerschick,
Illinois State University

Treasurer-Designate
Tim Pippert, Augsburg College

Editor, *The Midwest Sociologist*
Michael Haedicke, Drake University

Co-editors, *The Sociological Quarterly*
Betty A. Dobratz, Iowa State University
Lisa K. Waldner, University of St Thomas

DIRECTORS

At-large Director
Betsy Lucal,
Indiana University South Bend

Illinois Director
Monica Edwards, Harper College

Iowa Director
Charlotte A. Kunkel, Luther College

Kansas Director
Laura L. Workman Eells,
McPherson College

Minnesota Director
Doug Hartmann,
University of Minnesota

Missouri Director
Elaine McDuff,
Truman State University

Nebraska Director
Julie Pelton,
U. of Nebraska - Omaha

North Dakota Director
Abdallah M. Badahdah,
University of North Dakota

South Dakota Director
Meredith Redlin,
South Dakota State University

Wisconsin Director
Ron Berger,
University of Wisconsin-Whitewater

STUDENT DIRECTORS

Priya Dua,
University of Missouri - Columbia

Kimberly Maas,
Minnesota State U., Mankato

EXECUTIVE DIRECTOR

Lauren Tiffany
429 24th St. N.
La Crosse, WI 54601
Phone: (608) 787-8551
MidwestSS@centurytel.net

Doug Hartmann Elected to MSS Presidency

Last fall, MSS members elected Doug Hartmann, Professor of Sociology at the University of Minnesota, to the MSS presidency track.

Now titled president-elect-elect, Doug will serve MSS as president-elect and program chair for the 2015 annual meeting, as president in 2015-16, and as past president in 2016-17.

Doug completed his Ph.D. at the University of California, San Diego, in 1997; he earned his BA/MA University of Chicago.

A long-time MSS member, he received the MSS Early Career Distinguished Scholar Award in 2008. He is a co-founder and publishing editor of the award-winning, multi-media social science website TheSocietyPages.org.

Doug's research and writing focuses on race, religion, and diversity in the United States, sports as social intervention, public sociology, and critical race theory, and can be found in journals ranging from the *American Sociological Review* to *Ethnic and Racial Studies* and *The Sociological Quarterly*. (Most of his work is available at <http://thesocietypages.org/doug-hartmann/>).

Doug is also the author of *Race, Culture, and the Revolt of the Black Athlete: The 1968 Olympic Protests and Their Aftermath* (University of Chicago Press, 2003) and co-author of *Ethnicity and Race: Making Identities in a Changing World* (Pine Forge Press, 2007).

Hartmann served a term co-editing the ASA public outreach magazine *Contexts* and the second edition of *The Contexts Reader* (Norton 2011). In another W.W. Norton partnership, he is editing a series of volumes culled from The Society Pages, the first of which are slated for publication in the summer of 2013.



His next book is tentatively titled *Midnight Basketball: Race, Risk, and the Ironies of Sport-Based Crime Prevention in Neoliberal America*.

Having grown up in the “boothel” town of Cape Girardeau, Missouri, Doug is excited to take his turn in leadership for the Midwest Sociological Society. Doug’s vision and goals for the organization are two-fold: to maintain and build the intellectual community and scholarly excellence of MSS meetings, publications, and projects, and to position our organization and membership to take a more active, intentional role in shaping the future of American sociology, especially with respect to public scholarship and cultivating a better public appreciation for sociology and its contributions to society.

If you are interested in or want to contribute to turning these ideas into specific organizational initiatives, Doug can be reached at the University of Minnesota at 612.624.0835; or by email to hartm021@umn.edu.

ELECTION RESULTS

Badahdah, Berger, Pelton, Redlin Win Seats on Board of Directors



NEBRASKA

Julie Pelton, Assistant Professor of Sociology, University of Nebraska-Omaha, was re-elected to a second term to represent Nebraska's 76 members. Julie plans to continue her efforts to create stronger ties between the MSS, the Nebraska Undergrad Student Symposium, and sociologists in the state.

Julie is also serving as co-chair of the Local Arrangements Committee for the 2014 annual meeting in Omaha; and she plans to capitalize on the opportunity to attract and retain new members to MSS. She reports that it has been satisfying to be part of the board's current efforts to enhance the quality of the annual meetings; and she looks forward to seeing this hard work come to fruition. She is also interested in member retention and was instrumental in developing a survey to use with non-renewing members. A member of MSS since 2007, Julie has attended the annual meetings every year and presented numerous papers. She is a member of ASA and of MSWS. Connect with Julie at jpelton@unomaha.edu.

SOUTH DAKOTA

Voters chose Meredith Redlin, Professor of Sociology and Rural Studies, South Dakota State University, to represent South Dakota on the board. A long-time MSS member, Meredith has organized sessions and presented research at many annual meetings. She has also encouraged and brought graduate students to the meetings, so they may gain professional experience, keep current with research and build networks with peers.



Meredith's goals for her board service are to build on the already strong focus on diversity. She believes that MSS can contribute to our understanding of ongoing social change, extend our reach to affected communities and populations, and involve graduate and undergraduate students in continued research and presentation on the challenges facing our region. Meredith is a member of ASA, the Rural Sociological Society, and the Community Development Society. Email her at meredith.redlin@sdsstate.edu.

WISCONSIN

Ronald J Berger, Professor of Sociology, University of Wisconsin-Whitewater, was elected to represent Wisconsin's 77 members. A member of MSS for more than 30 years, Ron has presented a paper or organized a session at the MSS conference every year for many years. He has also served on and chaired the MSS Publications Committee.



Over the years, Ron has witnessed the growing involvement of undergraduate and graduate students in presenting papers and posters and will work to continue and increase this involvement. He has received awards for excellence in teaching and research and the UWW Chancellor's Award for Service to Students with Disabilities; and has published almost 50 articles and book chapters, as well as 15 books. He is a member of ASA, the American Society of Criminology, SSSP and the Wisconsin Sociological Association. Contact Ron at bergerr@uww.edu.

NORTH DAKOTA

Abdallah Badahdah, Associate Professor of Sociology, University of North Dakota, was re-elected to represent North Dakota's MSS members for a second successive term. One of Abdallah's goals is to represent the interests of all North Dakota sociologists to MSS, including sociological practitioners and students of sociology as well as academic sociologists.



A member of MSS since his graduate student days at Iowa State University, Abdallah has organized many paper sessions and presented more than ten papers at MSS meetings. His research has focused on AIDS prevention and stigmatization. He has received research grants from several agencies, including the Ford Foundation. He is a member of several professional groups, including ASA, the Association for Humanist Sociology, and the Sociologists' AIDS Network. You can reach Abdallah at abdallah.badahdah@und.edu.

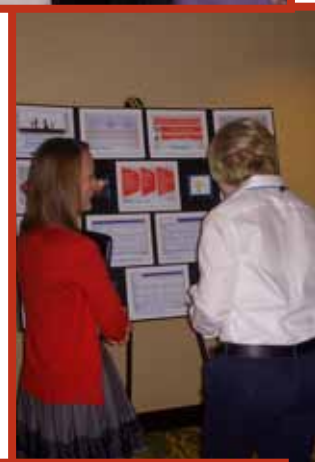
Undergrads Shine at Annual Meeting



NUMBER OF UNDERGRAD POSTERS SUBMITTED WAS HIGHEST EVER

Participation in the undergraduate poster session, coordinated by Jean Karlen of Wayne State College, reached an all-time high this year.

Forty-five undergraduate students, who represented twenty colleges and universities, submitted 37 posters on a variety of fascinating topics. Congratulations to all the poster session participants and to the advisors who mentored them through what was for most their first conference presentation experience.



Goen, Miller Win Poster Competition

Members of the Student Issues Committee, led by Committee Chair Priya Dua, reviewed the 37 undergraduate posters submitted to the Undergraduate Poster Session and awarded competition honors to Cambria Goen and Crystal Miller of Wichita State University for their poster, "Have you Met Ted? Unrealistic Sex in Media."

Their advisor is Jodie Hertzog.



Student Paper Competition Attracts 51 Participants

Congratulations to the Winners of the 50th Annual MSS Student Paper Competition in Honor of R. Dean Wright! Student papers competition awards were presented by MSS President Linda Lindsey, Graduate Paper Competition Coordinator Jen Dunn, and Undergraduate Paper Competition Judge Margo Ralston on Friday, March 29th, immediately preceding the Presidential Address at the MSS Annual Meeting.

Twenty-nine papers from seventeen universities were submitted in the graduate division. The graduate-level competition was coordinated by Jen Dunn; reviewers were S.J. Creek, Joel Powell, and David Schweingruber. Many thanks to the reviewers who volunteered their time for this professional task.

Graduate paper competition winners are pictured, on facing page, with President Linda Lindsey, who presented each winner with a plaque and a check. Their abstracts are included. Congratulations to all winners, their advisors, and their schools!

Congratulations to Undergrad Paper Competition Winners

Twenty-two papers from thirteen institutions were submitted in the undergraduate division. Review of the undergrad papers was coordinated by Marybeth Stalp; judges were Kate Niman and Margo Ralston. Winners are pictured, this page, with President Linda Lindsey, who presented each winner with a plaque and a check. Congratulations to all winners, their advisors, and their schools!

First Place: Michelle Skaff, Creighton University [photo, top right]
Advisor: James Ault
“Financial Education and Health”

Second Place: IndiAna Gowland, Macalester College [photo, center right]
Advisor: Erik Larson
“No Boys/Girls Allowed: How Public Schools Respond to Uncertainty Regarding Single-Gender Education”

Third Place: Samantha Galloway, Truman State University [photo, lower right]
Advisor: Amber Johnson
“It Depends on Who’s Watching: The Relationship between Perceived Audience Size and Gender Stereotyping in Advertisements as Measured by Super Bowl and Primetime Commercials.”



Congratulations to Grad Paper Competition Winners

First Place,
Graduate
Division:

Jessi Streib,
University of
Michigan

Advisor:
Alfred Young,
Jr.



"How
Appreciation
Crosses Class Lines:

Cultural Complements and the Case of
Different-Origin Marriages"

ABSTRACT: Current theories either use culture to explain same-class appreciation but not cross-class appreciation, or explain cross-class appreciation with little attention to culture. This study draws upon in-depth interviews to put forth an explanation of how culture contributes to cross-class appreciation. I show that respondents raised in different classes tended to possess different dispositions. Cross-class appreciation occurred as respondents felt that their partner's different dispositions could help them meet cultural ideals that they found elusive, changing, or contradictory. Other respondents did not feel that cultural ideals were elusive or contradictory; they appreciated partners who shared their class origin and their cultural experiences.

Backstrom ABSTRACT, cont'd from column at far right, this page.

campers' habits and sense of well-being. Lastly, eating and physical activity were explicitly and implicitly regulated through social control mechanisms. For each of these processes, I analyze how the children actively negotiated resocialization, and I conclude by discussing the challenges that participants faced when they left camp and the implications for lasting change occurring through family socialization versus camp resocialization.

Sharing
Second Place,
Graduate
Division:

Ryan
Ceresola,
Southern
Illinois
University
Carbondale

Advisor:
Kristen
Barber



"Doing Poor in AmeriCorps:
How National Service Members Deal with
Living below the Poverty Line"

ABSTRACT: "Probably, if I were honest with myself, I'd be like, 'Wow, this is where I'm at.'" These words, spoken by a second-year AmeriCorps member describe how many members feel about their post-college lifestyle of using food stamps, social services, and living below the poverty line. Stemming from Simmel's (1965) concept of poverty as a social category one is put into, and West and Fenstermaker's (1995) concept of class as something one "does," this paper examines the AmeriCorps program, to examine the interplay of raised class, current class, and "doing poor." In twenty-two in-depth interviews with a diverse sample of AmeriCorps members, I find, cross-racially, cross-class-lines, and cross-gender, AmeriCorps members actively work to disassociate themselves from having a "poor" identity, and, in turn, reinforce stereotypical images of what it means to "poor," which might have implications for how AmeriCorps interact with those that they serve – who are those they consider to be "truly poor." These findings have important ramifications for identity construction, volunteerism, and the sociological understanding of poverty internalization.

Sharing
Second Place,
Graduate
Division:

Laura
Backstrom,
Indiana
University

Advisor:
Timothy
Hallett



"Resocialization at a Children's Weight
Loss Camp"

ABSTRACT : In response to the rise in childhood obesity, weight loss camps have been viewed as a possible solution by some parents and their children. Yet, little is known about what occurs at these important sites of cultural meaning about body size. In this paper, I investigate three inter-related research questions. First, what types of resocialization processes occur at a children's weight loss camp? Second, how do children negotiate these resocialization processes? Third, what are the strengths and drawbacks of resocializing eating habits in a non-familial environment? Using ethnographic and interview data from a weight loss camp for children. I begin with the children's accounts of how family socialization shaped their eating habits prior to camp. Guided by the theoretical concept of body projects, I illustrate strategies aimed at the individual level of changing habits. First, the campers were directed to use their newfound knowledge about nutrition and portion size to guide their food choices. Second, the campers were taught to incorporate mental strategies aimed at embodied change, specifically their feelings of fullness and style of eating. Next, I explain how the structured environment that differed in key ways from their homes allowed for the recalibration of the
Cont'd, first column, this page.

Jane Addams Award to Mytoan Nguyen Akbar

By Denise Kall, Past Chair, Women in the Profession Committee

Each year, the Women in the Profession Committee presents the Jane Addams Outstanding Service Award to a person who has shown dedicated service on behalf of women and girls. It is our pleasure to award the 2013 Jane Addams Outstanding Service award to Mytoan Nguyen Akbar.

The Jane Addams Outstanding Service Award is an effort to "reward and make visible such efforts and to highlight positive role models who advance girls' and women's issues, causes, or status through personal involvement in service activities." Mytoan Nguyen Akbar embodies the spirit of this award. She has the "passion dedication, and activism of Jane Addams through efforts to improve the status of girls and women."

It is easy to see how Mytoan's scholarly research ties in with her public sociology and social activism. Mytoan clearly utilizes her scholarly interests in the intersectionality of migration status, ethnicity, gender and class to infuse her social activism. Mytoan has empowered many women and girls through a program that she spearheaded, the "Telling Our Stories in Madison Project."

"Telling Our Stories" is a community action project to give immigrant and refugee high school youths a chance to archive, reflect upon, and publish their oral histories and poetry in an anthology. As the founder, grantwriter, and facilitator of the "Telling Our Stories Project," she managed an intricate network of Madison youths, community writing mentors, community partners, funders, media relations, executive board, and relations with parents to ensure total collaboration and input from all stakeholders in a very "bottom up" process of grassroots oral history making.

As Mytoan stated, "Everyone's ideas and concerns were worth listening to and addressing, especially those which ensured that marginalized stories were documented in an ethical and respectful manner." Through this project, Mytoan gave girls and women a safe space to share their struggles, their milestones, and to process their complex intersectional identities as aspiring first-generation college-bound women of color.

Mytoan's service is remarkable and inspiring to all of us and truly deserving of the Jane Addams Outstanding Service Award.



The Jane Addams Award was presented to Mytoan at the conclusion of "Jane Addams and Hull House Revisited," a panel session organized by Past President Susan Stall, at left, above.

The panel included Frances McNamara, author of *Death at Hull House*; Mary Ann Johnson, past director, Jane Addams Hull House Museum at UIC; and Margaret Luft, past director, Jane Addams Hull House Association, Uptown Center.

Thank you to Betty Cooper for the photos on this page!

**THE CALL FOR NOMINATIONS FOR THE 2014 JANE ADDAMS AWARD
WILL BE PUBLISHED IN THE FALL NEWSLETTER.**

Presidential Awards to Peter Parilla and Diane Pike

By Linda Lindsey, Past President

Two outstanding individuals were recognized for their service to MSS with special Presidential awards. These awards were given by Linda Lindsey after her Presidential Address in Chicago to former MSS president Diane Pike and to outgoing MSS Secretary Peter Parilla.

Diane Pike was recognized as the consummate MSS volunteer. She has worked tirelessly and enthusiastically in numerous roles to assure MSS fulfills its mission of providing outstanding scholarly activities and of socializing the next generation of sociologists. She literally moved MSS to the 21st century by inaugurating the online system we now use to organize and schedule all the events and activities of the annual meeting. In addition, before and after her MSS Presidency, she assumed a multitude of roles that included creating and institutionalizing an orientation for new board members and committee chairs; and convening a task force on scholarly quality.

Diane is a remarkable, innovative individual and clearly her endeavors have translated to enhance MSS in the same remarkable, innovative ways. It is between our annual meetings during the hectic academic schedules we all live by that Diane takes the hours necessary to carry out the bulk of these volunteer responsibilities. This Presidential award recognizes the outstanding contributions of Diane Pike to MSS.

Peter Parilla was recognized for his outstanding service to MSS as Secretary and Membership Committee chair. Among his many duties, Peter organized massive amounts of sometimes semi-coherent material, sifting it, and presenting it to our board and membership in relevant, understandable ways. Demanding duties notwithstanding, Peter willingly, diligently, and always cheerfully responded to a multitude of requests, often the first to volunteer to take on new tasks surfacing at our board meetings.

Peter's steady guidance and support in all these endeavors kept board meetings on track while also assuring all voices were heard and recorded. He serves as a wonderful role model for the next round of MSS leadership. With Peter's ongoing commitment to MSS, I know he will not stray too far when we call on him yet again for advice! The work of our Secretary is vital but often hidden. This award recognizes Peter Parilla's dedication and excellence in service to MSS.



Peter Parilla was unable to attend the award ceremony. Diane Pike, right, accepts her Presidential Award.

Distinguished Book Award to *The Paradox of Youth Violence*, Honorable Mention to *The Tender Cut*



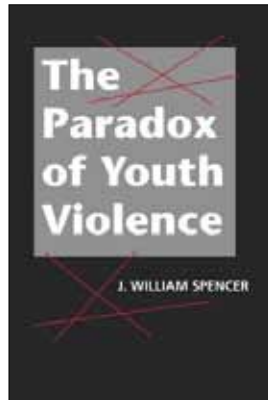
J. William "Jack" Spencer of Purdue University was awarded the 2013 MSS Distinguished Book Award for *The Paradox of Youth Violence*, published in 2011 by Lynne Rienner Publishers.

A long-time MSS member, Jack is now an Associate Professor of Sociology at Purdue University-West Lafayette. Among other courses, he teaches "Crime, Media, and Mass

Media" where he uses popular films to illustrate sociological theory and research. As "Paradox" suggests, his research centers on public discourse about social problems.

"Jack did an outstanding job in reframing the issue of youth violence through a social constructionist view," reported the book award committee. *The Paradox of Youth Violence* exemplifies the contributions that sociology can make as a discipline. By reframing how contemporary media portrays youth violence in terms of how institutions, structures and agency are shaped by race and gender, the book provides a basis from which social and political discussions concerning youth violence can proceed. This is particularly relevant given recent shootings across the country."

Jack was presented with a plaque and a check at the annual meeting in Chicago.



Jack responded, "Seldom does our work bring fame or fortune. Peer recognition such as the MSS Distinguished Book Award means a lot to me. I thank the Book Award Committee for their hard work. I hope this book –in its own small way- prompts people to rethink how we approach youth violence and youth problems more generally."

The book award committee also awarded an honorable mention to *The Tender Cut: Inside the Hidden World of Self-Injury*, authored by Patricia A. Adler, University of Colorado, and Peter Adler, University of Denver; and published in 2011 by New York University Press. The committee wrote, "We thought that the Adlers brought together a compelling set of data encompassing personal life histories along with data collected through social media to reframe the issue of cutting from a psychological phenomenon to a sociological one. Durkheim would have been proud!"



Patti Adler responded that it was a thrill to receive the award, but she was sad that she and Peter could not attend to accept it in person. The award was doubly welcomed by the Adlers because the creation of the Distinguished Book Award took place at their behest during their MSS Presidency in 2006-07.

The book award committee was chaired by Anne Eisenberg, State University of New York – Geneseo; and included Joan Hermesen, University of Missouri; and Barbara Snowadzky, University of Maine at Augusta.

TSQ Award to Dunlap, McCright

The Publications Committee, led by Chair Joel Best, conferred *The Sociological Quarterly* Distinguished Contribution to Scholarship award upon Aaron M. McCright and Riley E. Dunlap, for their article, "The Politicalization of Climate Change and Polarization in the American Public's Views of Global Warming, 2001-2010," published in TSQ 52 (Spring, 2011): 155-94.

Although unable to attend the MSS meeting to receive the award, both authors expressed their appreciation.

McCright wrote, "Riley and I are honored to receive this Distinguished Contribution to Scholarship Award from the Midwest Sociological Society. To be selected for such an award is a truly humbling experience, given the impressive quality of articles that get published in *The Sociological Quarterly*. General sociological journals are the lifeblood of our discipline and help connect our increasingly specialized fields. We greatly value getting published in general journals like *The Sociological Quarterly*."

Each author received a plaque and a check.

Social Action Awards to The Covering House and Project NIA

By Xavier Escandell, Chair, Social Action Committee

Each year, the MSS Social Action Committee awards two \$1000 grants in support of social action by Midwestern grass-roots organizations. This year, grants were awarded to The Covering House and Project NIA.

The Covering House is a classic example of grassroots activism that began with one woman's vision and became a vibrant organization. Their mission: "The Covering House seeks to provide refuge and restoration for girls under the age of 18 who have experienced sexual exploitation or sexual trafficking."

In 2008, a documentary on human sex trafficking inspired Covering House founder Dedee Lhamon to investigate human trafficking in the U.S.

She said, "I was heartbroken to find that not only is human sex trafficking alive and flourishing in our country, but there are few resources for these young girls even when they are rescued."

Within a year, Dedee had established The Covering House, incorporated it, and formed a board of directors. By 2010, The Covering House was granted nonprofit status. The Covering House includes a network of activists –volunteers, university interns, and professionals– who generously give their time. Services now offered at The Covering House include counseling, medical and dental care, legal advocacy, tutoring and educational support, mentoring and life skills coaching.

In 2013, The Covering House will open a residential home to add to their current services. This will be one of few residential homes available to girls who are recovering from sex trafficking victimization. Learn more about The Covering House at their website: www.thecoveringhouse.org

Project NIA was launched in 2009 as an advocacy, organizing, popular education, research, and capacity-building center with the long-term goal of ending youth incarceration. In Swahili, NIA means "with purpose." Ultimately, Project NIA's purpose is to prepare communities to get involved in creating an effective strategy to address violence and crime.

The ultimate goal of the organization is to dramatically reduce the arrest, detention, and incarceration of youthful offenders and to promote instead the use of restorative and transformative practices. Project NIA supports youth in trouble with the law as well as those victimized by violence and crime, through community-based alternatives to the criminal legal process, and partners with numerous stakeholders to create such alternatives. For more about Project NIA, visit the website: <http://www.project-nia.org/home.php>

At left, in both photos, below:
Xavier Escandell, Chair, Social Action Committee,
with representatives of The Covering House, left;
and Project NIA, right.



MSS PRESIDENT AND PETER HALL LECTURER ADDRESS PARTICIPANTS ABOUT NARRATIVES AND GLOBALIZATION

By Michael Haedicke, *TMS* Editor

Participants in the 76th Annual Meeting found themselves enlightened, provoked, and inspired by the recently-revived Peter Hall Lecture in symbolic interaction, which took place on Thursday afternoon, and by the MSS Presidential Address on Friday.

Donileen Loseke, Professor, University of South Florida, delivered the Peter Hall Lecture titled "Narratives and the Production of Emotional Meanings in Public Spaces." Offering the examples of the death of Princess Diana, the attacks of September 11, 2001, and the recent Newtown, Connecticut, school shooting, Loseke challenged the audience with the puzzle of how to make sense of moments of cognitive and emotional unity in a society that is normally fragmented in its moral beliefs and skeptical of experts.

The answer to this puzzle, Loseke contended, has to do with the work of narratives in public life. More than statistics, reasoned arguments, and research results, narratives have the ability to promote shared meanings in a divided and "unsettled" society and thus play an important role in the public conversations upon which American democracy rests. Narratives become believable and compelling as they ring changes on deeply-held cognitive and emotional codes. Cognitive codes – the bundles of meanings that define and classify actions and people – have received the most attention from sociologists, but it is emotion codes that may play the greatest role in contemporary public life. In a society in which knowledge has become more fragmented and contested, Loseke explained, how we feel often makes more of a difference than what we think. Stories offered by politicians to justify such collective endeavors as war and welfare are influential because they tap into complexes of expectations and ideals about how we should experience and express emotions.

Loseke illustrated these ideas by offering a story about her experiences teaching an undergraduate course about family violence. She surprised her audience by explaining that most of her students lack interest in all but the most extreme and bizarre forms of violence – stories about slaps, shoves, and spankings barely create a ripple in her classes. Stories about violence of the latter sort, however, generate both interest and emotional



Peter Hall Lecturer Donileen Loseke, and Past President Peter Hall

response. This is because stories of unjustified harm inflicted on defenseless individuals tap into shared cognitive codes that define victims and villains and corresponding emotional codes that associate sympathy with victimhood and outrage with villainy. Conversely, stories that do not easily connect with shared codes or that incorporate contested codes may generate debate – or even confusion – rather than a clear, collective response.

MSS President Linda Lindsay, Professor, Maryville University of St Louis, offered her own critical narrative of neo-liberal globalization in a Presidential Address titled "Sharp Right Turn: Globalization and Gender Equity." She argued that while work on gender makes up an important

part of the scholarship in the sociology of development, it has been marginalized within work about the causes and consequences of globalization. Drawing from her own research about the status of women in Chinese society, she made a case for moving the analysis of gender inequalities to the center of globalization research.

Lindsay's talk proceeded through a linked set of "cost-benefit analyses" that examined, in sequence, neoliberal globalization and economic inequality, neoliberal globalization and the status of women, and neoliberal globalization and the experiences of women in China. She began with a brief history of economic globalization in the twentieth century, which documented the rise of free market ideologies supported by international financial institutions like the World Bank, and argued that the 1980s marked a "sharp right turn" towards neo-liberal beliefs and practices that pushed aside labor organizations, distinctive cultural traditions, and national policies in the pursuit of free trade. Neo-liberal globalization has today achieved hegemonic status, she explained, such that global stakeholders of all sorts must work within the boundaries of neo-liberal strategies even if they wish otherwise.

In the course of her three "cost-benefit analyses," Lindsay compared the arguments of neo-liberal globalization's defenders with an analysis of its effects on economically marginalized populations, particularly women. While its defenders argue that

"ADDRESSES" CONTINUED NEXT PAGE

2013 ANNUAL MEETING

"ADDRESSES" CONTINUED FROM PREVIOUS PAGE

neo-liberal globalization produces economic growth, increased rule of law, job opportunities, and a respect for cultural diversity, Lindsay contended that often these "laudable goals are divorced from how it plays out in practice." In particular, Lindsay offered a careful critique of the World Bank's 2012 World Development Report, a guiding document for policymakers, which called for greater openness of national economies in order to enhance the economic and legal status of women.



MSS President
Linda Lindsey

The analysis of neo-liberal globalization becomes more complex in the case of China, Lindsay noted, since the country places less trust in markets and more in state guidance than many others. While China's increasing openness to the global economy has resulted in improved conditions for some women, it is also associated with continued gender stratification in the factories and special economic zones that provide export markets with inexpensive products. As she projected photographs of the world's largest Nike factory, located in China's Guangdong Province, Lindsay explained that business owners tend to train men for specialized technical and supervisory positions, while treating women as an expendable labor force.

The 2013 Peter Hall Lecture and Presidential Address continued the long MSS tradition of presenting rigorous and publicly engaged scholarship in an environment that encourages informal discussion and thoughtful debate. The 2014 meetings in Omaha promise more of the same.

Update from ASA-MSS Fellow Deadric Williams

Being a part of the MSS/ASA Minority Fellowship Program (MFP) has been an honor and privilege. Given the competitiveness of the MFP, I am thankful to the Advisory Panel for selecting me as one of the 2012-2013 Fellows, and to the Midwest Sociological Society for their generous and continued support. Over the years, the MFP has been instrumental in the growth and development of several minority scholars and for me to be a part of this esteemed group is invaluable. The MFP has introduced a broader set of minority scholars and professional development opportunities. As a result, I have developed more mentor/mentee relationships with other minority scholars to expand on what I am currently receiving at the University of Nebraska-Lincoln. Indeed, the MFP has greatly contributed to my overall academic and professional growth trajectory.



One of the highlights of the program is the ability to have 'protected time' to focus exclusively on research projects. For example, during the fall 2012 semester, I was able to dedicate much of my time and energy to work on a manuscript I began a year prior. One positive outcome is that I have a first-authored manuscript accepted for publication at the Journal of Family Issues with my mentors, Dr. Jacob E. Cheadle and Dr. Bridget J. Goosby. The paper examines the direct and indirect effects of economic hardship and relationship distress through several pathways such as depressive symptoms, interpersonal discord, parenting stress, and coparenting for both mothers and fathers. The findings reveal that although economic hardship was linked to each mediating pathway, only interpersonal discord was a significant link between economic hardship and relationship distress. Moreover, this effect was stronger for fathers than mothers. That is, as economic hardship increases, mothers report higher levels of discord by fathers than father's report of discord by mothers. In addition, I have another first-authored manuscript (with my academic mentor) under review at the Journal of Health and Social Behavior. Finally, in April 2013, I received second place in the Alpha Kappa Delta graduate student paper competition for a paper titled "The Manifestation of Depression in Families: A Dyadic, Longitudinal Structural Equation Modeling Approach."

Currently, I am beginning my dissertation, which will examine the cross-partner effects of stress in one partner (i.e., depressive symptoms, work-family stress, and parenting stress) and family well-being of the other partner (i.e., relationship quality, parental engagement, and coparenting) over time. This research will address whether these processes vary across three important contexts: race/ethnicity, poverty, and neighborhoods. Theoretically, my work uses a cumulative inequality approach to understand how stress and distress affect family processes over time, and how disadvantage contexts exacerbate the effects of stress on families. To address this analytically, most of my work takes a multi-group, dyadic longitudinal structural equation model approach in order to empirically test the extent to which stress affect families within and between contexts.

With my interests in family, inequality, and quantitative methods, the MSS/ASA Minority Fellowship Program has helped me to focus on building a publication record and honing in on my dissertation research. Again, being a part of the MFP has been an honor and privilege.

Ice Cream, Ice Cream!



MSS's signature social event - the traditional Ice Cream Social - is fun for everyone. Each year, past presidents are invited to serve MSS members once again- this time with ice cream!

The Chicago Marriott chef and catering staff provided a tempting array of toppings for the ice cream - and a good time was had by all. Past presidents who served as dippers were Susan Stall, Peter Hall, Helen Moore, Rick Schaefer, Clark McPhail, Diane Pike, Gary Fine, and Chris Prendergast.



THANK YOU
TO PETER
HALL FOR THE
PHOTOS ON
THIS PAGE!



First-Night Welcome: T-Shirt Happy Hour



A new conference first-night welcome event -the T-shirt Happy Hour - drew a large crowd, resplendent in their favorite T-shirts. Prizes were given for t-shirts in several categories, including

- * The funniest
- * The most inspirational
- * The smallest college
- * The largest university
- * The place farthest from Chicago
- * The oldest t-shirt with a year printed on it.

The prizes? MSS 2013 T-shirts, of course!



Second Annual Trivia Night

More than 80 annual meeting participants signed up to play Trivia. A buffet supper was provided, teams were formed and the competition was on! The Mizzou Sociology table won first place. Program Chair Barbara Keating presented them with MSS t-shirts. "The Unintended Consequences" took second place; and Barbara presented mystery novels to each team member. Open Table #7 named themselves the "Lucky Seven" and won third place -and Robert Fulghum books.



2013 ANNUAL MEETING

.....
.....

Thank you to Barbara Carson for
some of the photos on this page!



CALL FOR STUDENT PARTICIPATION: 51ST ANNUAL STUDENT PAPER COMPETITION IN HONOR OF R. DEAN WRIGHT

The Midwest Sociological Society invites students of sociology to participate in the 2014 Student Paper Competition. The competition is open to currently-enrolled undergraduate and graduate student members of MSS. Papers are judged through a blind review with separate panels of judges for graduate and undergraduate papers.

Three prizes in each division: 1st Prize: \$250 2nd Prize: \$150 3rd Prize: \$100
plus waiver of annual meeting registration fee.
Prizes may be picked up by the winner at the annual meeting in Omaha.
MSS reserves the right not to award prizes, or to award 2nd or 3rd prizes but no 1st.

----- Rules for the 2014 Competition -----

Papers

1. Research-based papers involving research on human subjects must secure Institutional Review Board approval prior to beginning research; or undergo an equivalent review procedure and describe it in the methodology section of the paper.
2. Papers may be co-authored by students, but not by students and faculty. Advisors are expected to provide guidance, but not to assist with writing the paper. A student may author or co-author only one paper in the competition.
3. Students may nominate their own work. With a student's permission, an advisor may submit a paper on a student's behalf.
4. Maximum text length is 25 double-spaced pages (12-point font), not counting abstract, references, tables or figures.
5. Students who submit papers to this competition may submit the same paper to sessions at the annual meeting and/or to the editor of The Sociological Quarterly for publication consideration.

Submission Procedures and Deadline

6. Student competitors must pay MSS dues for 2014 prior to submitting a paper. [Pay online at www.TheMSS.org]
7. The paper may be submitted as two to three pdf files [preferred!] or as two to three text files, but it must be submitted as two to three documents, as follows: (1) A cover sheet including title of the paper; the name, institutional affiliation, email address, telephone number, mailing address and the graduate or undergraduate status of the author(s); and the name, email address, telephone number, and mailing address of the student's advisor. (2) The paper itself must include NONE of the identifying information from the cover page, but must include, at the top of its first page, the full title of the paper, followed by the abstract, if one is included. [See www.theMSS.org for sample documents.] (3) IRB certification or appropriate documentation must be submitted as a third document, for research-based papers involving human subjects.
8. All submissions must be received by January 11, 2014. Send submissions electronically ONLY to: MidwestSS@centurytel.net [IMPORTANT: Do not send submissions to the competition chairs.]
9. Your submission will be acknowledged by email when received. If your submission is not acknowledged within 72 hours of your sending it, it is your responsibility to follow up with the MSS Executive Director at: midwestss@centurytel.net ; or with a call to (608)787-8551.

Notification of Competition Results

10. All competitors will be notified of results by February 1, 2014.

Questions / Other

11. Questions? Please contact Graduate Competition Chair Elizabeth Hoffman at ehoffmann@purdue.edu, or Undergraduate Chair Krista Lynn Minnotte at krista.minnotte@und.edu .
12. NOTE: DO NOT send papers to the chairs!
13. NO reviews will be provided to competitors, either verbally or in writing.

PUBLICATIONS COMMITTEE SEEKS 2 MEMBERS

The MSS publications committee seeks two new members to serve three-year terms beginning in spring 2013, and ending in spring 2016. Interested MSS members may apply directly, or nominate others.

The committee is charged with overseeing, monitoring and recommending policy to the board concerning publication of *The Sociological Quarterly*, and *The Midwest Sociologist*; and administration of the annual student paper competition. The committee also judges the biennial TSQ Distinguished Contribution to Scholarship Award, advises the board on the operation of the website, solicits applications for new editors for the society's publications, makes recommendations to the board with respect to the appointment of editors, and advises the editors on policy.

Please send applications to Publications Committee Chair Joel Best, following the directions below. Applicants who have experience with refereed publications are encouraged to apply. Nominations are accepted until Aug. 1.

Questions? Please send questions about the committee's work by email to Chair Joel Best, joelbest@udel.edu.

To apply, please indicate in your cover email that you are applying for the committee membership. Send your vita and brief application letter, as attachments, to Chair Joel Best, joelbest@udel.edu.

NEW MEMBER SOUGHT FOR FINANCE COMMITTEE

The Finance Committee seeks a new member to serve as a five-year term beginning spring 2014, with the possibility of further service as finance committee chair and treasurer. Some experience with budgets or investments is useful, but not required. To apply, please send a note describing briefly your past MSS participation, your relevant experience, if any, and attach your vita, to Finance Committee Chair Tim Pippert, pippert@augsborg.edu.

OTHER COMMITTEES SEEKING NEW MEMBERS

To apply for a position on any of the committees listed below, please contact the MSS office at MidwestSS@centurytel.net before August 1st to signify your interest. Please name the committee in which you're interested, and send a brief statement about why you're interested in that committee. Learn more about each committee's tasks on the committee page at www.TheMSS.org.

These committees are all seeking new members:

- | | |
|--|-----------------------------------|
| • Annual Meeting
(Needs Local Arrangements volunteer for Kansas City 2015) | • Minority Scholars |
| • Nominations & Elections (Needs one committee member each from IL, MN, at-large.) | • Professional Issues & Standards |
| • Scholarship Development [formerly Endowment] | • Social Action |
| • Long Range Planning | • Sociological Practice |
| | • Student Issues |
| | • Teaching & Learning |
| | • Women in the Profession |

Committee reports

are now online on the COMMITTEE page at www.TheMSS.org.

Committee applicants!

Please remember-

- Committee appointments are made by the president and board of directors, at their fall meeting, after taking many factors into account.
- Nominations made by the committee itself are considered by the board, but are not a guarantee of appointment.
- In any given year, there are more applicants for committee membership than there are openings for new members, so if your first application does not succeed, please do not take it personally; and please do try again.

GRANT & AWARD OPPORTUNITIES



Call for Research Grant Proposals

YOU ARE ELIGIBLE IF:

- You are a current member of MSS.
- Hold a Faculty Position with Ph.D. (This includes teaching faculty, adjunct faculty, visiting faculty and non-tenure track faculty as well).

The MSS Scholarship Development Committee offers research grants up to \$2,500. We seek to fund high impact proposals. Such proposals could be:

- * Early stage research. Such research could consist of the data collection for a new project or a pilot or preliminary study that could lead to refining a research design / conceptualization.

- * Completion of an ongoing project. Funding for such research would accelerate the time to completion for a project already in process.

- * Leverage other resources. Such research would clearly make other available resources more productive.

Research proposals should specify how funding from the Scholarship Development Committee will make a significant impact on the research project by identifying alignment with one of the above goals.

The principal applicant must submit a report of the outcome of the research to the Scholarship Development Committee.

Grant applications are accepted ONLY between Jan. 15, 2014, and Feb. 15, 2014. References should follow the ASA style guide.

A complete proposal includes

- cover page;
- statement of the research problem;
- theoretical framework;
- summary of methodology and design;
- An itemized budget with a brief budget justification. Everything from this bullet point up to the statement of the research problem should be 1200 words or less. Thus, the proposal itself (excluding the cover page should not exceed 1,200 words).

- Proof of IRB approval or a completed IRB submission if human subjects' research is part of the project. (IRB approval not required at the time of grant application, but will be required upon completion).
- Proposals must identify a principal investigator, and include a mailing address.
- Applicants should clearly state what types of supplemental materials they need funded in order to carry out their research. Thus, the committee needs to know the entire funding needs of the project so that the committee can determine whether the research is likely to be successfully carried out in the one-year time period allotted. Also, the applicant must list all other funding awards, pending grants, and /or any monies applied for in relation to their submitted proposal.
- A letter approving your access to any agency/organization/research facility / databank required for your project.
- Statement of intention to attend the MSS Annual Meeting the following year to present your research findings if you are selected to receive MSS funding. [Grant winners are expected to be present at a special invited session.] We do not fund travel to the MSS conference to present your results and your itemized budget must not include this.
- C.V. and list of references.

SEND E-COPIES

Please collate all your application documents into a single pdf. Please send your application pdf by email, with "MSS RESEARCH GRANT APPLICATION" in the subject line of your email, to Committee Chair Kevin McElmurry, Kmcelmur@iun.edu, with a cc to the MSS executive office at midwestss@centurytel.net

TIMING

The submission process opens January 15, 2014, and closes at midnight, February 15th, 2014. Applications submitted before or after this time period will not be considered.



Call for Nominations for the MSS Distinguished Book Award*

Nominations and review copies are due Oct. 31, 2013.

The Midwest Sociological Society invites nominations for the MSS Annual Distinguished Book Award to recognize outstanding contributions to sociological research, theory and policy analysis. Eligible books advance sociological analysis in an original and substantive way and must have been copyrighted in 2011, 2012, or 2013.

**Before nominating, see the complete nominations requirements online or request them from the MSS Exec Office by email to: MidwestSS@centurytel.net*



Call for Nominations for the MSS Early Career Scholarship Award*

The Early Career Scholarship Award will recognize a body of work by a younger scholar, working alone or with collaborators, which is particularly meritorious, creative or enlightening. The award is offered every other year, and includes a \$500 prize. Instituted to underscore the Society's commitment to the professional development of younger scholars, the Early Career Scholarship Award will be bestowed at the annual meetings in 2014.

Nominations for the award shall be submitted to the chair of the award committee by Nov. 15, 2013. *

**Before nominating, see the complete nominations requirements online or request them from the MSS Exec Office by email to: MidwestSS@centurytel.net*

GRANT & AWARD OPPORTUNITIES



Call for Applications: Visiting Scholar Grants

Applications accepted year-round as long as funds available. Before applying, inquire about fund availability.

The MSS Endowment Committee accepts applications for the Visiting Scholar/Visiting Researcher Program year-round, as long as there are funds left to give. The purpose of the program is to support the dissemination of scholarship and research by providing funds for leading researchers and scholars to make short visits to colleges, universities, and state association meetings to share their knowledge and skills with faculty and students.

The host school or association may be in the nine-state Midwest Sociological Society region (The Dakotas, Illinois, Iowa, Kansas, Minnesota, Missouri, Nebraska, and Wisconsin) and must not have a Ph.D. program in sociology. An at-large member of the MSS whose host institution has no Ph.D. program in sociology may also apply on behalf of his or her institution.

The invited scholar/researcher must be a member of the Midwest Sociological Society at the time of application. (To determine whether a scholar/researcher is an MSS member in good standing, please contact MSS at MidwestSS@centurytel.net.) The grant provides up to \$1000 (as long as funds are available) to cover transportation costs, incidental costs for the scholar/researcher while traveling to/from the host institution, and reasonable hotel/lodging expenses, while the host school provides meals, hospitality, and any honoraria. The scholar/researcher contributes his or her time and skill.



Visiting Scholar Grants in Action in Missouri, Alaska

In 2012, the MSS Visiting Scholar Grant Program helped fund two important initiatives spearheaded by MSS members.

MSS member Sine Anahita applied for a Visiting Scholar Award on behalf of the University of Alaska Fairbanks to support travel to Fairbanks by Dr. Sharon Bird, Professor of Sociology and Research Director of ISU ADVANCE at Iowa State University. In Fairbanks, Dr. Bird delivered a keynote speech, gave a community lecture, and met with the Faculty Senate Committee.

MSS members Xiaoqing Wang, Bonnie Mitchell, and Betty Cooper were collectively responsible for an MSS Visiting Scholar award in support of Missouri's Sociological Association's 2012 conference speakers, Dr. Gary Brinker, Fort Hays State University, and Dr. Heidi R. Ballard, Otterbein University.

Dr. Cooper wrote: "These two outstanding leaders not only prepared lectures, they actively participated in every phase of the two-day program. It would not have been possible to have these out-of-state leaders without the funds that MSS Visiting Scholar Program provided. Thank you MSS!"

Visiting Scholars/Researchers may, among other things, participate in:

- Workshops on methodologies of interest
- Seminars on special topics
- Public lectures on current issues
- Conferences with faculty members on their research
- Meetings with students interested in advanced work.
- Classroom presentations
- Keynote presentations at state association meetings.

Applications can be submitted by host institutions year-round, and require a letter containing a plan for the visit, a letter of support from the host's dean or equivalent academic administrator, the contact information for the invited scholar/researcher, a tentative schedule of dates and times, and a travel budget. You may name one or more scholars you would like to have for a visit. If you have no nominees, indicate the fields or specialties of particular interest to your students and faculty, and the committee will seek to recruit a scholar for the visit.

To apply, send materials electronically to:

Committee Chair Kevin McElmurry, kmcelmu@iun.edu.

Please cc the application and supporting materials to the MSS Exec Office at MidwestSS@centurytel.net



Call for Nominations for Social Action Awards

The MSS Social Action Committee invites nominations of community-based organizations for two annual \$1,000 Social Action Awards. The nominated organizations are typically located in the geographic area of the annual conference; however, other organizations from the MSS region or an international organization that works on global issues and affects the local or regional area will be considered. The award recognizes grassroots work toward social justice and social change. The awards will be presented at the 2014 Annual Meeting in Omaha.

Please include the following information when nominating an organization:

1. Organization's name, address, phone and fax number
2. Name of a contact person
3. Attachment of a brief (1-2 page) description of what the organization has done that merits this award.

Submit nominations electronically after Sept. 1, and before Nov. 1, 2013, to:

Xavier Escandell, Chair, Social Action Committee

Xavier.escandell@uni.edu

THE BUDGET AND FINANCIAL CONDITION OF MSS

By Tom Gerschick, MSS Treasurer, Illinois State University

One of the core tenets of the MSS strategic plan is for the Finance Committee and Treasurer to “generate sufficient assets to supplement MSS activity annually” while reducing our dependence on income generated by our journal, *The Sociological Quarterly*. Financially, as the figures in this document demonstrate, our finances are solid. As MSS Treasurer, I am cautiously optimistic regarding our financial future. Yet, both the Finance Committee and I remain concerned about the impact that Open Access publishing could have on the MSS’s financial condition and consequently our ability to meet our organizational goals. We are committed to preparing the membership for the future by educating them about our current financial situation and possible future scenarios.

THE GOOD

For the first half of the fiscal year, September 1, 2012-February 28, 2013, our investments benefitted significantly from the rise in the stock market. Our current fund balances are:

The Sociological Quarterly Fund

9/1/12: \$117,790.60

2/28/13: \$126,037.99

Net increase: \$8,247.39

Percentage increase: 7%

MSS Grants & Awards Fund (F.K.A. as the Exum Fund)

9/1/12: \$342,761.12

2/28/13: \$366,784.48

Net increase: \$24,023.36

Percentage increase: 7%

MSS Endowment Fund (F.K.A. as the Crockett Fund)

9/1/12: \$503,311.95

2/28/13: \$545,360.32

Net increase: \$42,048.37

Percentage increase: 8.35% (this account is slightly more aggressively invested)

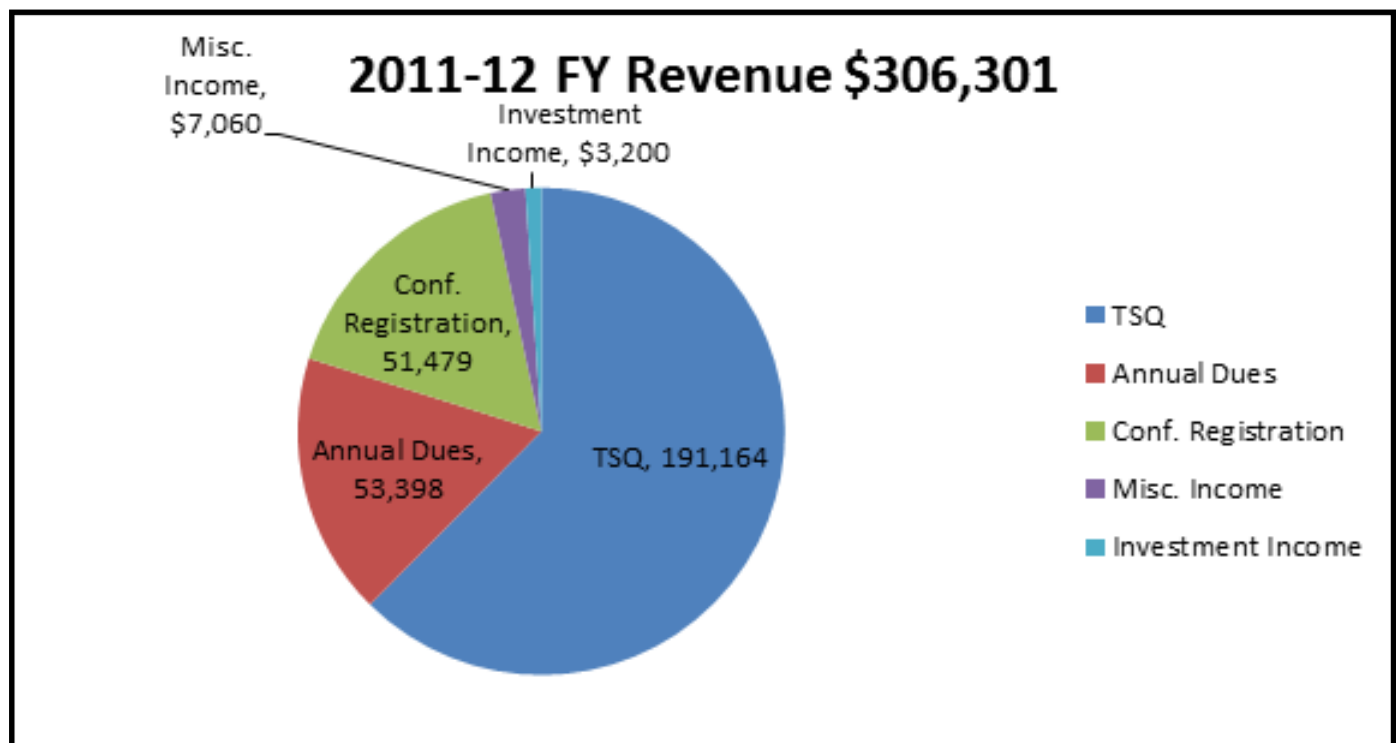
MSS Total Investments

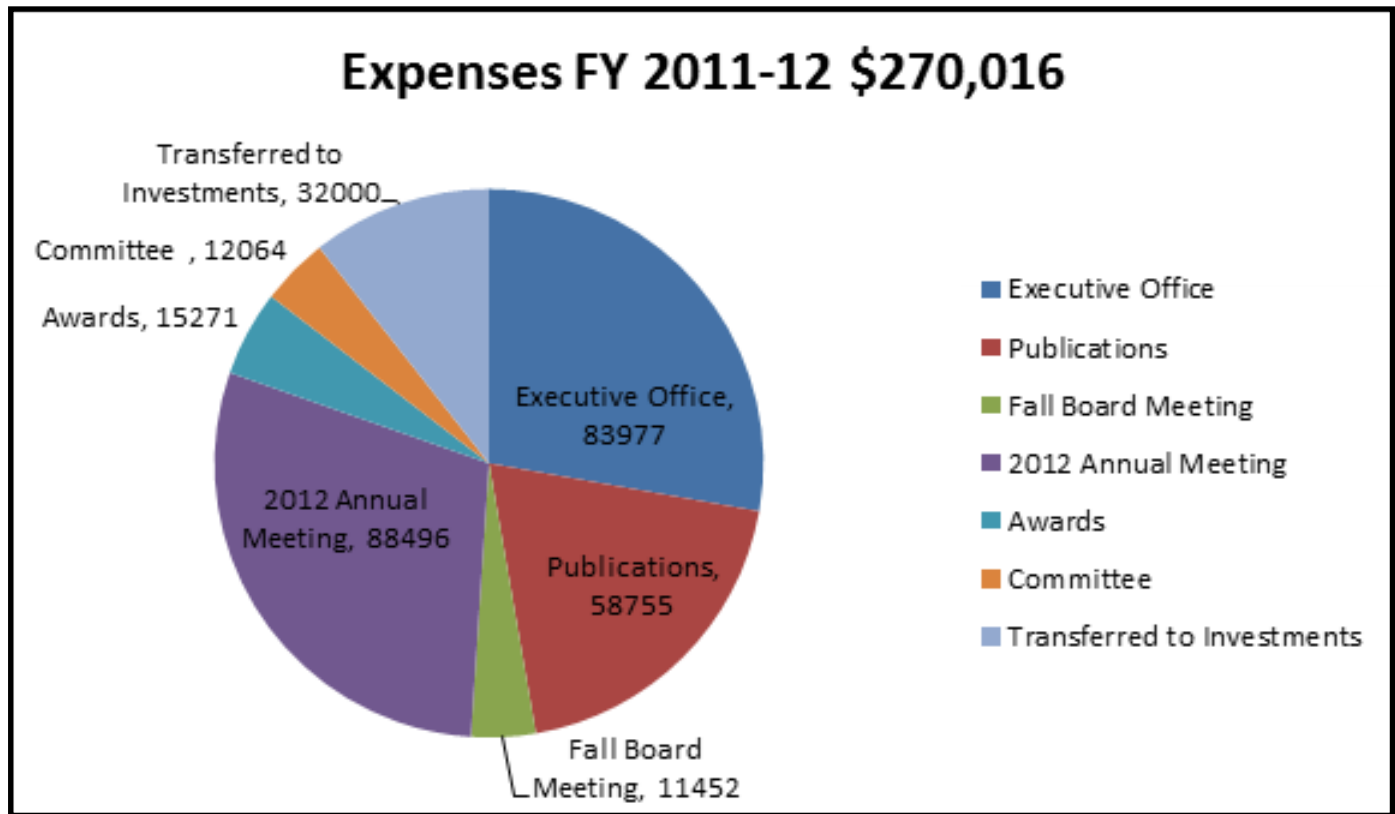
9/1/12: \$963,863.67

2/28/13: \$1,038,182.79

Net increase: \$74,319.12

Percentage increase: 7.7%





THE UNKNOWN

Two recent developments concern me. First, Open Access continues to spread. Second, we were recently informed by our publisher, Wiley Blackwell, that *TSQ* must begin to accept Open Access articles that were funded by the Research Councils UK (RCUK) and the Wellcome Trust. The Open Access veil in *TSQ* has been pierced. Every indication is that Open Access will continue to encroach on academic publishing, including *TSQ*. This threatens a significant revenue stream for the Society.

In our last completed fiscal year ending August 31, 2012, *The Sociological Quarterly* (*TSQ*) generated \$191,163.62 of the MSS's total income of \$306,300.45. Thus, it represented more than 62% of that income. Our contract with Wiley Blackwell ends December 31, 2016. At this point in time, we have no idea what the implications of Open Access will be on our next publishing contract, but we are preparing for a potential, significant reduction in journal income.

Not surprisingly, Society costs continue to increase. We anticipate spending about 40% more this year publishing *TSQ* than we did just two years ago. The costs of our annual meeting continue to grow despite the heroic efforts of Executive Director Lauren Tiffany and President Barbara Keating to keep them affordable. In fiscal year 2011-12, revenue related to the meetings (from registration, exhibits, and tours) covered only 66% of the costs of the meetings. Thus, the Society subsidized the 2012 Meetings by almost \$30,000 or approximately \$29 per attendee.

THE BUDGET

Charts at left and above depict revenue and expenses for the last completed fiscal year.

THE FINANCIAL PLAN

Given the uncertain future of our publishing revenue and our rising costs, the MSS Board is focused on a combination of raising revenue and reducing costs. The Board recently voted to build the Endowment Fund to \$2,000,000 so that in the future it could provide a revenue stream (assuming a conservative 4% return) of \$80,000 annually to subsidize the Society without drawing on the principal. In order to accomplish this, we are going to have to continue to invest significantly as we have in the last several years while reinvesting the proceeds from the currently-rising stock market.

Simultaneously, the MSS Board is considering a range of cost-cutting measures. At the recent annual meeting, the Board authorized the Treasurer and the Finance Committee to begin systematically evaluating the efficacy of MSS expenditures. Changes will be proposed to the Board at the Fall Board meeting.

The Treasurer and the Finance Committee will continue to use the *TMS* and other communication channels to keep the membership informed of MSS finances. Should you have any questions about this, please do not hesitate to contact me at tjgersch@ilstu.edu.

MEMBER NEWS

MARX IN SOHO

COMMENTS INVITED



Bob Weick's performance of *Marx in Soho* at MSS 2013 played to a full house. If you were there, actor Bob Weick invites your comments. Please send feedback, suggestions, or commentary to Bob at marxinsoho@gmail.com.

Bob is now booking performances for the next academic year. It is never too early to begin the conversation or reserve dates. If you are interested in bringing the play to your campus, organization or community, visit the site: www.ironagetheatre.org/marx.html or contact Bob at (610) 329-1785 or marxinsoho@gmail.com.

OPPORTUNITIES

Visit the Jobs & Opportunities page at the MSS website: www.TheMSS.org

BOOKS PUBLISHED

Katherine van Wormer, University of Northern Iowa, together with co-authors David W Jackson and Charletta Sudduth, has published *The Maid Narratives: Black Domestic and White Families in the Jim Crow South*. The book contains narratives by women of the Great Migration from Mississippi to Iowa, and by southern white women who grew up with maids in their homes.

Elizabeth A. Hoffmann, Purdue University, has published *Co-operative Workplace Dispute Resolution: Organizational Structure, Ownership, and Ideology*. The book is available from Ashgate/Gower Publishing.

BOOK OF CARTOONS FOR SOCIOLOGY TEACHERS

Ron Stover, Professor at South Dakota State University, has created a book of cartoons useful for sociology teachers. Published by the South Dakota State University Rural Life and Census Data Center, the book is available free online until Dec. 31, 2013. More cartoons may be added during the year.

Access it or download it here: http://www.sdstate.edu/soc/rlcdc/i-o/dept_pub.cfm

LIFE MEMBERSHIPS

CONFERRED

The MSS Board of Directors has awarded Life Memberships to retired members Kathleen McKinney, and Robert J Wazienski, both of Illinois State University; and to Theodore C Wagenaar, Miami University, Ohio.

FALL BOARD MEETING

DATES ANNOUNCED

The MSS Board of Directors will hold their fall board meeting Sept. 20-21 at the Omaha Hilton, site of the 2014 Annual Meeting.

.....

"2013 ANNUAL MEETING" CONTINUED FROM PAGE 1

So many people to thank: MSS Executive Director Lauren Tiffany is a gem. She has coordinating MSS and our Annual Meetings down to a science of checklists and timelines complimented by a fine overview, excellent advice and exceptional support. Student Director and Assistant Program Chair Kimberly Maas proved to have top-notch organizational and technology skills, backed by an unending work ethic. Local Arrangements Chair David Boden created the MSS'13 triskelion logo; recruited and supervised the student workers at the registration desk; and was ever present there taking care of countless details and solving problems. Meeting Savvy creator/owner Brad Smith gave us 24/7 technical support, often replying in minutes to explain or help.

"Thank You" also goes to the MSS'13 program committee for their ideas and support; for organizing sessions; for representing MSWS, SSSI and MSS committees on my program committee; and coordinating co-sponsored sessions. A special "Thank You" goes to the more than 200 volunteers on fifteen committees and the Board who do the organizational work of always moving MSS forward in planning for the future, addressing challenges, serving our members and supporting our discipline.

And a special thank you to the members who elected me in 2010. It is a pleasure to serve.

Cheers! –Barbara Keating, MSS 2013 Program Chair

MEMBERSHIP MATTERS

Deadline for the next issues of *TMS*

Aug. 15th for fall issue / Dec. 15th for Annual Meeting Packet / April 15 for spring issue.
Send news by email to Editor Michael Haedicke: michael.haedicke@drake.edu



About MSS membership

TO JOIN or RENEW: Visit the membership page at www.themss.org to pay your dues by credit card. OR use the membership form in this issue to pay dues by mail.

STUDENT MEMBERSHIP is available to graduate and undergraduate students at any institution of higher learning. Persons gainfully employed as sociologists should not be student members.

SUSTAINING MEMBERSHIPS AND OPTIONAL CONTRIBUTIONS: Any contributions beyond the basic membership levels help the Midwest Sociological Society to provide grants, awards and minority scholarships; support the society's operations now and in the future; keep dues and meeting registration fees low.

DON'T KNOW WHEN YOU 'EXPIRE?' MEMBERSHIP is for the calendar year, beginning Jan. 1 and ending Dec. 31. To determine your membership expiration date, just check the label on this issue of *TMS*. If it says, "2013," your membership expires Dec. 31, 2013. Please renew for 2014 before Jan. 31st to ensure that you receive an annual meeting packet and uninterrupted publications; and that you remain eligible for MSS committees, grants and awards.

NOT RECEIVING MSS PUBLICATIONS? If you should miss any issues of *The Midwest Sociologist* or *The Sociological Quarterly*, due to moving or other problems, please request replacement from MSS exec director Lauren Tiffany at MidwestSS@centurytel.net.

NOT RECEIVING MSS EMAIL? Some servers filter out MSS mail – don't forget to check the junk mail box. Please add MidwestSS@centurytel.net to your Safe Senders list. If you are not receiving occasional emails from MSS, make sure you're subscribed by sending an email with "Subscribe Me!" in the subject line to: MidwestSS@centurytel.net

MOVING? Change your address for all MSS publications with one e-mail to: MidwestSS@centurytel.net.



Code of Ethics of the Midwest Sociological Society

Members of the Midwest Sociological Society subscribe to and are bound by the Code of Ethics of the American Sociological Association. To read the Code in its entirety, please visit the ASA online at www.ASAnet.org and follow the link to "Ethics." MSS members are reminded that sexual or racial harassment is unethical in any professional setting, and that the annual meeting of the Midwest Sociological Society constitutes such a professional setting. Instances of harassment should be reported as soon as possible to the Professional Issues and Standards Committee. To view the MSS grievance procedure in its entirety, please go to the MSS website - www.theMSS.org - and click through to the "About MSS" page; or email MidwestSS@centurytel.net and request a copy.

NEW!!! THREE-YEAR MEMBERSHIPS AVAILABLE:

When you renew your membership next fall for 2014, you'll see a three-year option on the membership form:

Three-year memberships are now available at all membership levels, at a discounted rate.

For example: Regular \$60 memberships may be extended over three years for only \$155. Three-year memberships initiated in 2013 will extend to Dec. 31, 2016.

The multi-year membership is a two-year pilot program, to evaluate whether members like this option.

Questions? Contact the MSS executive office:

MidwestSS@centurytel.net

Upcoming Meetings

2014 — Omaha, NE
Thursday - Sunday, April 3-6

2015 — Kansas City, MO
Thursday - Sunday, March 26-29

2016 — Chicago, IL
Wednesday - Saturday, March 23-26

2014 MSS ANNUAL MEETING THEME / CALL FOR ORGANIZERS

*“Left Behind Sociology”:
Re-visiting Old Ideas, Old Theories,
and Understudied People*

Join us April 3rd – 6th, 2014, in Omaha to celebrate our discipline and our ideas! Organize a session. Share your expertise in a professional workshop. Exercise your intellectual curiosity. Split the social atom. Improve your teaching. Socialize and have fun!

The theme for the 2014 meeting is “Left-Behind Sociology.” The Left Behind series of books by Tim LaHaye and Jerry B. Jenkins has become wildly popular nationally, especially among evangelical Christians. The books describe a post-apocalyptic world where God has immediately removed her followers to heaven in the end-of-times Rapture, leaving the “left-behind” population to deal with the horrors that follow. The books have sold millions of copies, in part by promising an escape to a utopian future for a select set of believers while the remaining population suffers during the Biblical end times.

The “Left-Behind Sociology” theme is an attempt to get us to focus on people and ideas that are “left behind” in current research, scholarship, and teaching. In our zeal to reach conclusions, affect students, and change communities, what types of people, ideas, and theories have been left behind? What are the implications of doing this for sociology as a discipline? Do these omissions harm our credibility with publics we attempt to influence and those whose causes we champion?? Who has been run over by our cars as we’ve rushed down the highway to the latest born-again revival?

Most importantly, the 2014 meetings in Omaha are an opportunity to exercise our sociological imaginations. Omaha is my home town and there will be all the scholarship, fellowship, and fun that we can jam into three days. See you in Omaha!

Kevin T. Leicht, President-Elect / Program Chair
Kim Maas, Student Director / Program Assistant

FOLLOW MSS2014 ON TWITTER @MSSOMAHA #MSS2014

2014 MSS ANNUAL MEETING DEADLINES

MID-MAY, 2013	ONLINE PORTAL OPENS FOR SESSION PROPOSALS.
AUG. 31, 2013	DEADLINE FOR SESSION PROPOSALS.
SEPTEMBER, 2013	ONLINE PORTAL WILL OPEN FOR PAPER PROPOSALS.
OCT. 24, 2013	DEADLINE FOR PAPER SUBMISSIONS TO ORGANIZERS.
NOV. 14, 2013	DEADLINE FOR ORGANIZERS TO SUBMIT COMPLETED SESSION LISTINGS.
DEC. 1, 2013	TARGET DATE FOR THE 2014 PRELIMINARY PROGRAM TO BE POSTED ONLINE.

2014 MSS ANNUAL MEETING INSTRUCTIONS FOR SUBMITTING SESSION PROPOSALS

We invite you to submit session proposals through the online submission portal at the MSS website, at www.themss.org.

How to Submit Your Session Proposal

MSS invites you to submit your session proposal through the online submission portal at www.theMSS.org

When the session submission portal opens in May, an email 'blast' will be sent to all MSS members.

If you are a member who does not receive MSS mass emails, please visit the MSS website mid-May to access the portal.

Before you enter the portal:

- Be ready to indicate which of the session types, below, you propose to organize.
- Have on hand the name, email and affiliation of your co-organizer(s), if any.
- Take time to thoughtfully compose and have on hand: a descriptive session title, and a brief, 1-2 sentence explanation of your session, to attract the most appropriate submissions.

Session types

- Author Meets Critics.
- Paper Session: These formal sessions, the core of our annual meetings, include the presentation of completed papers and a discussant's constructive feedback. Prospective presenters will submit a two-page abstract to the session organizers who will choose the four or five papers best serving the focus of the session. Chosen presenters will send the completed papers to the discussant by March 1, 2014. Organizers generally serve as the presider and discussant or may recruit others to do so.
- Panel Session: Organizers will invite three to five panelists to present on a shared area of expertise or interest. While panelists make formal presentations, they are generally not the empirical reports that predominate in paper sessions. The organizer moderates discussion between the panelists and with the audience.
- Workshop: Interactive professional development opportunities facilitated by organizers are often participatory sessions. Workshops generally include topics related to teaching, writing, publishing, technology or analysis. These workshops and related paper sessions are included on the listings for the Faculty Certificate of Teaching and Learning, Faculty Development Certificate and the Future Faculty Certificate Programs.
- Roundtable: These less formal and smaller groupings are appropriate for presentation and discussion of research proposals, works in progress or topics of special interest. Whether a given table group involves presentations or conversation on shared interests, there is no audio-visual, only handouts. A small number of colleagues around a round table can provide valuable feedback and generate great ideas.

COMING IN JULY:

THE SOCIOLOGICAL
QUARTERLY

VOL. 54, NO. 3

SUMMER 2013



Inside your July issue of TSQ

The Dialectic of Nation-Building in Post-Colonial Tanzania

—Ronald Aminzade

Paths to Mobility: The Mexican Second Generation at Work in a New Destination

—Sarah Morando

Ethnic Generations: Evolving Ethnic Perceptions among Dominant Groups

—Orna Sasson-Levy

Trust, Culture, and Cooperation: A Social Dilemma Analysis of Pro-Environmental Behavior

—Kyle Irwin and Nick Berigan

Super Intentions: Golf Course Management and the Evolution of Environmental Responsibility

—Brad Millington and Brian Wilson

From Road Rage to Everyday Automotive Incivility: A Routine Activities Approach to Low-Level Deviance

—Philip Smith and Ryan King